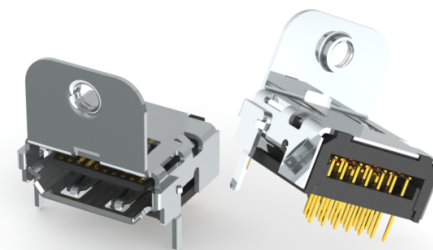


## HDMI TYPE-A RECEPTACLES - RIGHT ANGLE PCB

### Features:

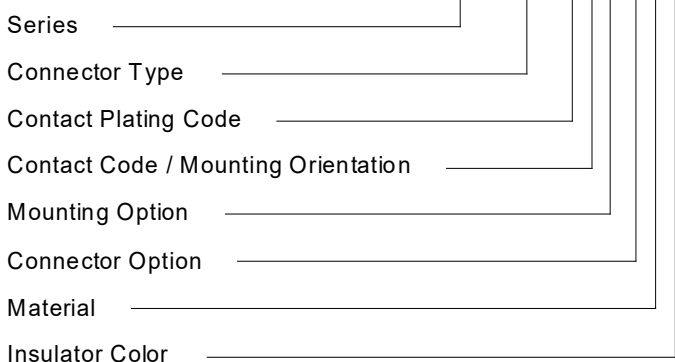
- Up to 18 Gbps communication speed
- Industry standard plug and play technology - 'Hot Pluggable'
- Compatible with synchronous and asynchronous data transfer
- Data and power combined in one small package
- RoHS compliant



### Specifications:

Insulator Material	Thermoplastic UL-94V-0
Contact Material	Copper alloy
Contact Plating	Nickel under plating with Gold plating on contact areas
Shell Material	Copper alloy with Nickel plating
Insertion Force	44N maximum
Withdrawal Force	10N minimum to 39N maximum

### EXAMPLE PART NUMBER: 694B119-327-611



#### Series:

694B Receptacle

#### Connector Type:

119 HDMI Type-A

#### Contact Plating:

1 2µ" ~ 5µ" Gold  
 2 Gold Flash  
 3 5µ" ~ 10µ" Gold  
 5 15µ" Gold  
 6 30µ" Gold

#### Contact Code / Mounting Orientation:

2 Right Angle PCB

#### Mounting Option:

7 Plastic Posts & 2 Through Hole Grounding Tabs

#### Connector Option:

6 M3 Threaded Mounting Tab (11.3mm PCB to Centre)  
 7 M3 Threaded Mounting Tab (12.3mm PCB to Centre)

#### Material:

1 LCP

#### Insulator Color:

1 Black

#### Ordering Code Notes:

Not all part numbers deriving from this ordering guide will be available.

Some may be available upon request. Please first consult the website, if the connector is not readily available then please contact EDAC's customer service for further inquiries.